



Use of Rapid Eye data in Technical Cooperation activities in Indonesia



Dr. Helmut Dotzauer

Bonn, 05.10.2012



Federal Ministry
for Economic Cooperation
and Development



Program goal:

The implementation of strategies on forest protection and sustainable forest management reduces emissions from the forestry sector that are detrimental to the climate and improves the living conditions of the poor rural population.



FORCLIME Programme **Structure**

Forests and Climate Change Programme (FORCLIME)

- **Technical Cooperation Module**



- **Financial Cooperation Module**

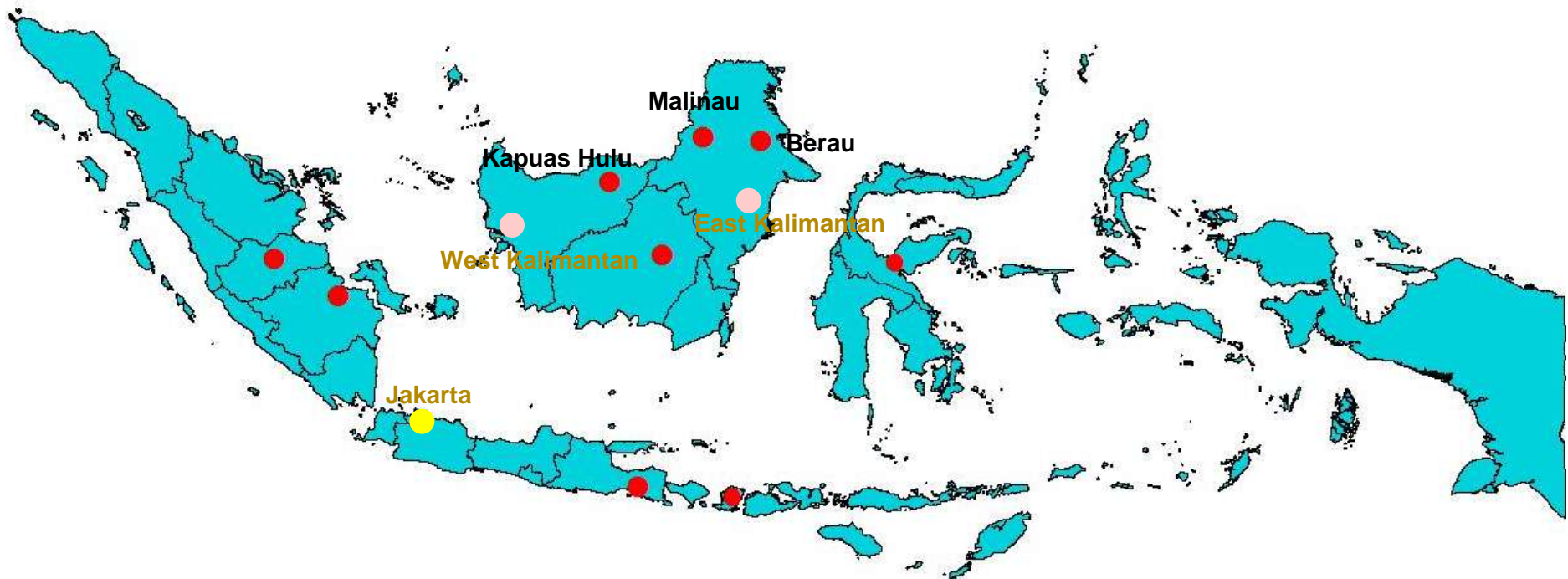


- TC Module: 3 components

- **Investments + Consulting Services for implementation of district-based REDD demonstration activities**



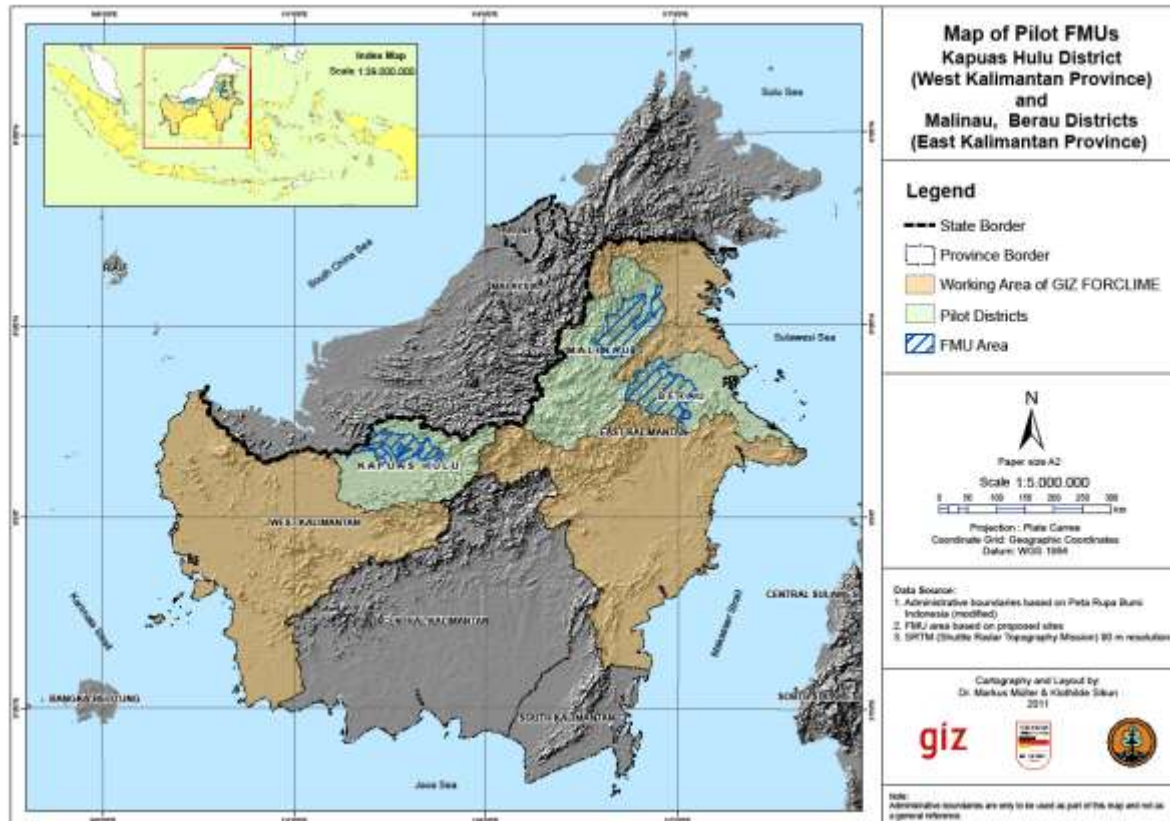
FORCLIME :
Technical module: € 9.3 Million (2009-12)



- National level
- Provincial level
- District level



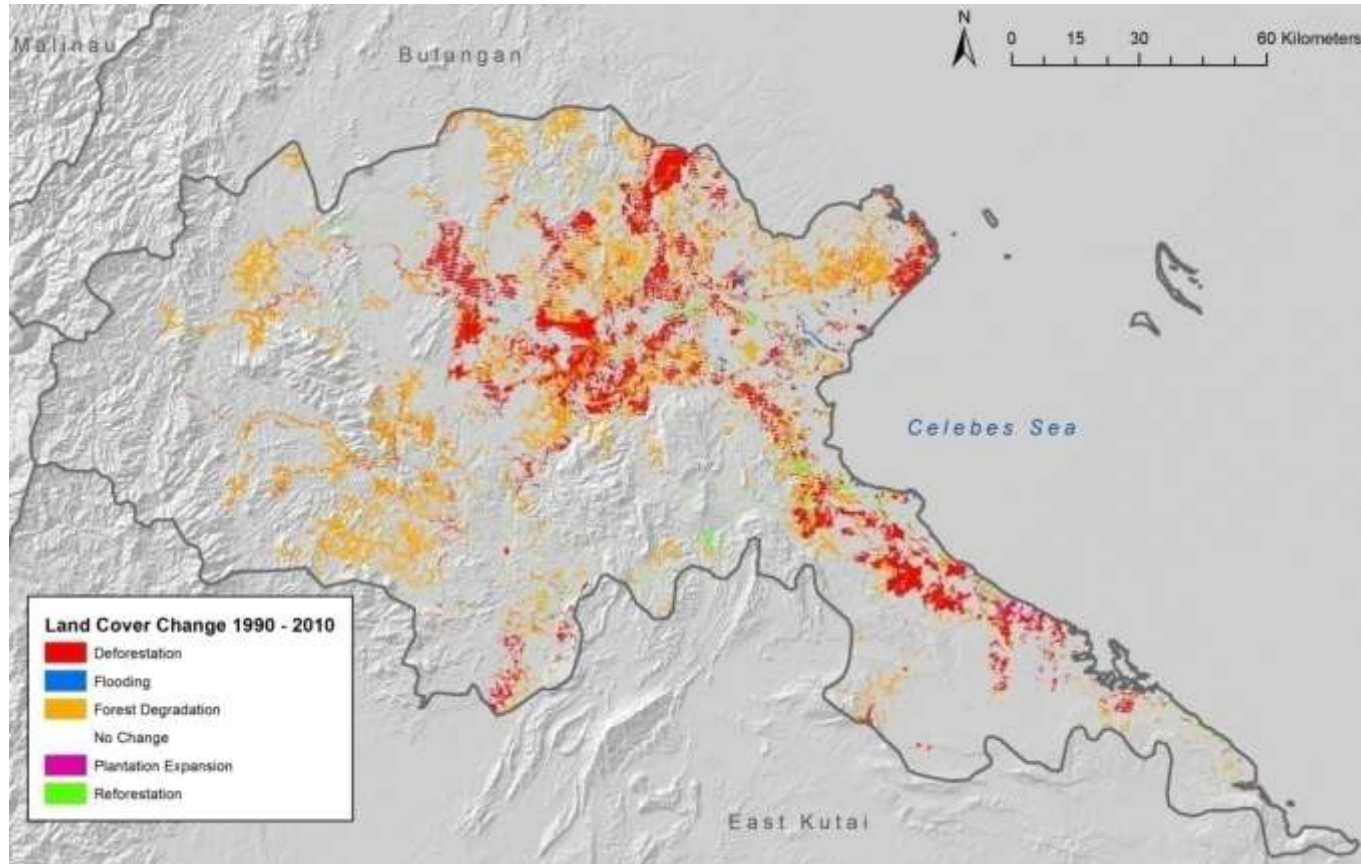
The three “model” Districts

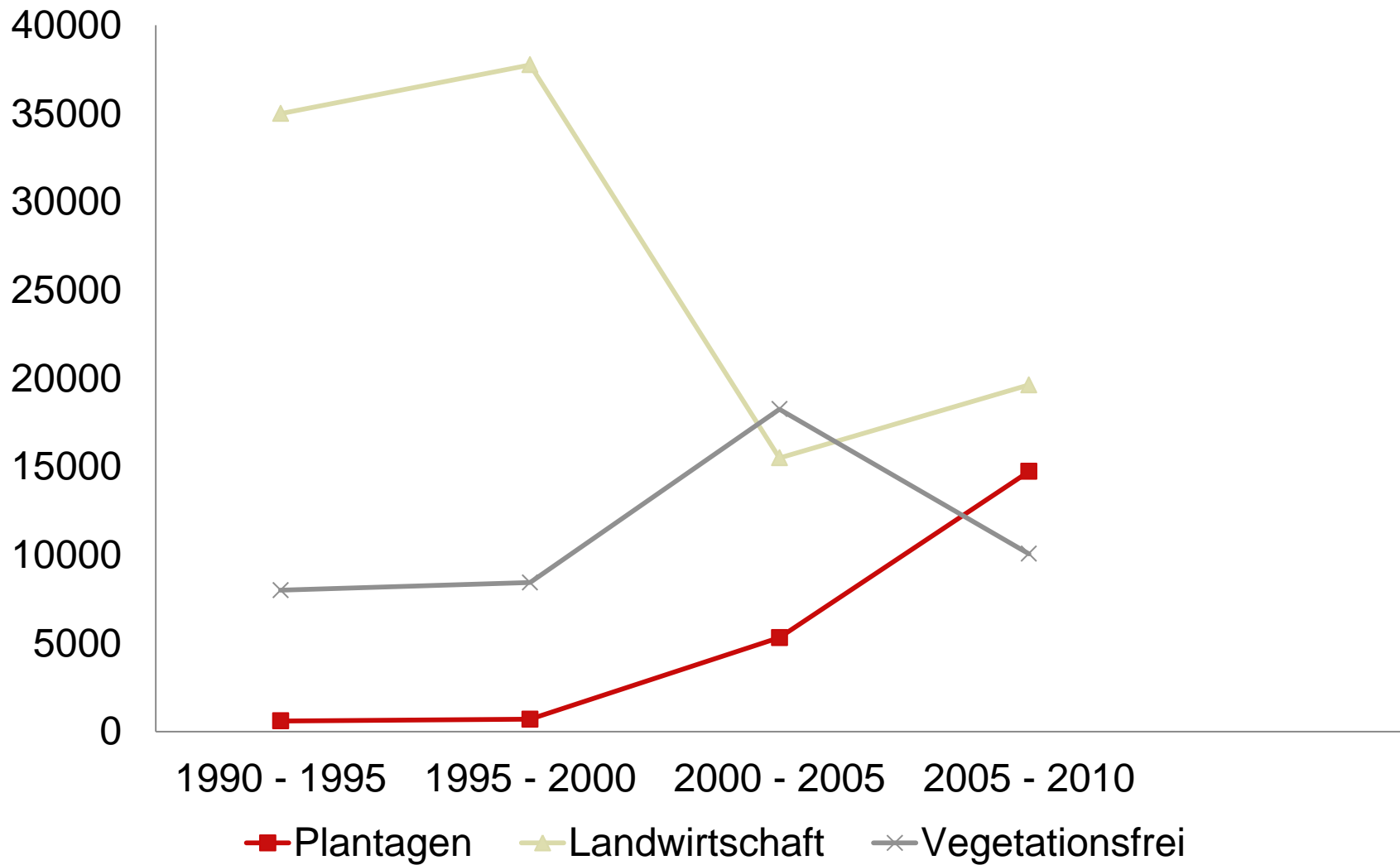


- **Malinau**
39800 km²
population
62500
- **Berau**
34100 km²
population
180000
- **Kapuas Hulu**
29850 km²
population
186000



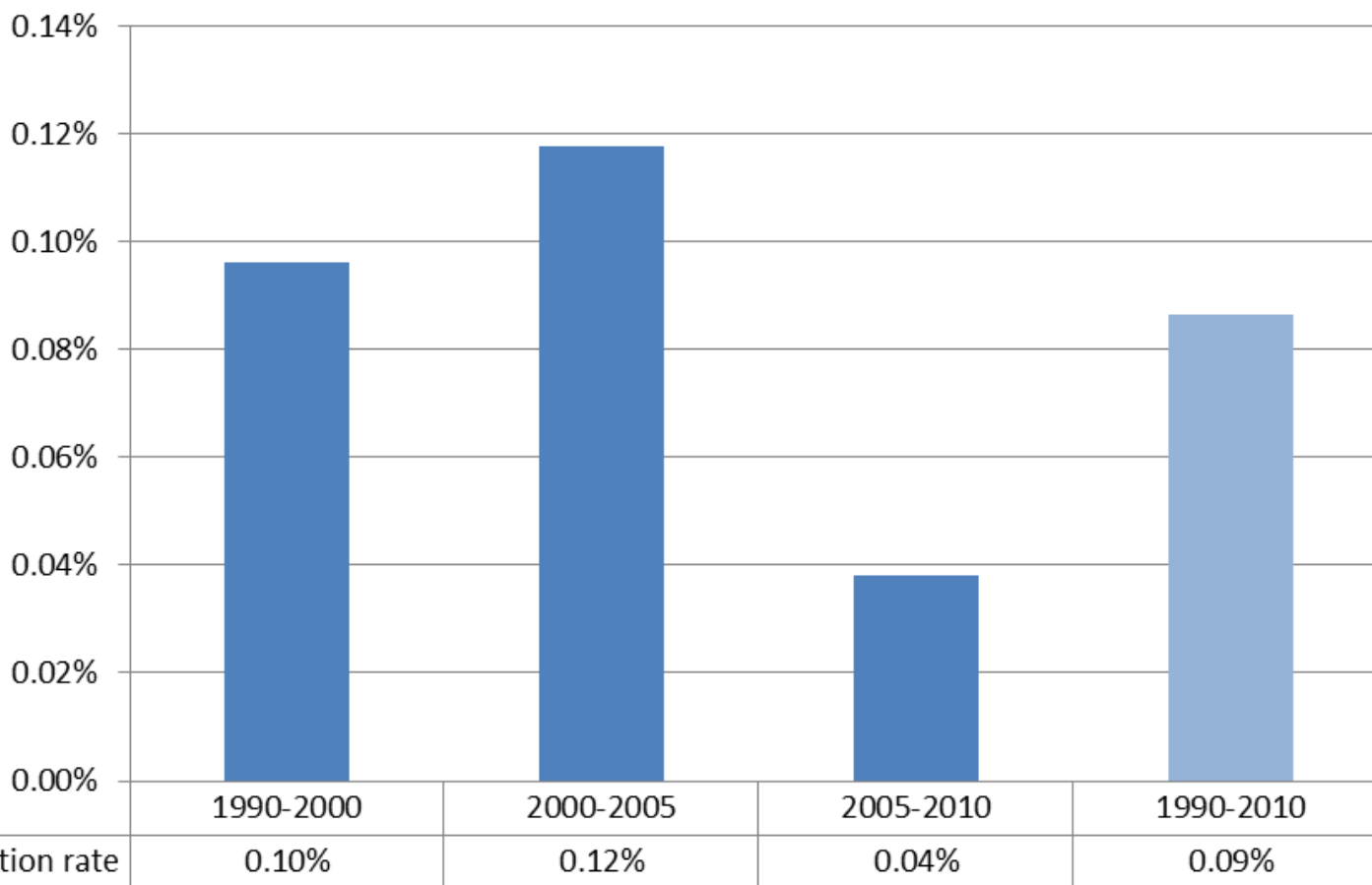
Historical Land-use change 1990 – 2010 in Berau





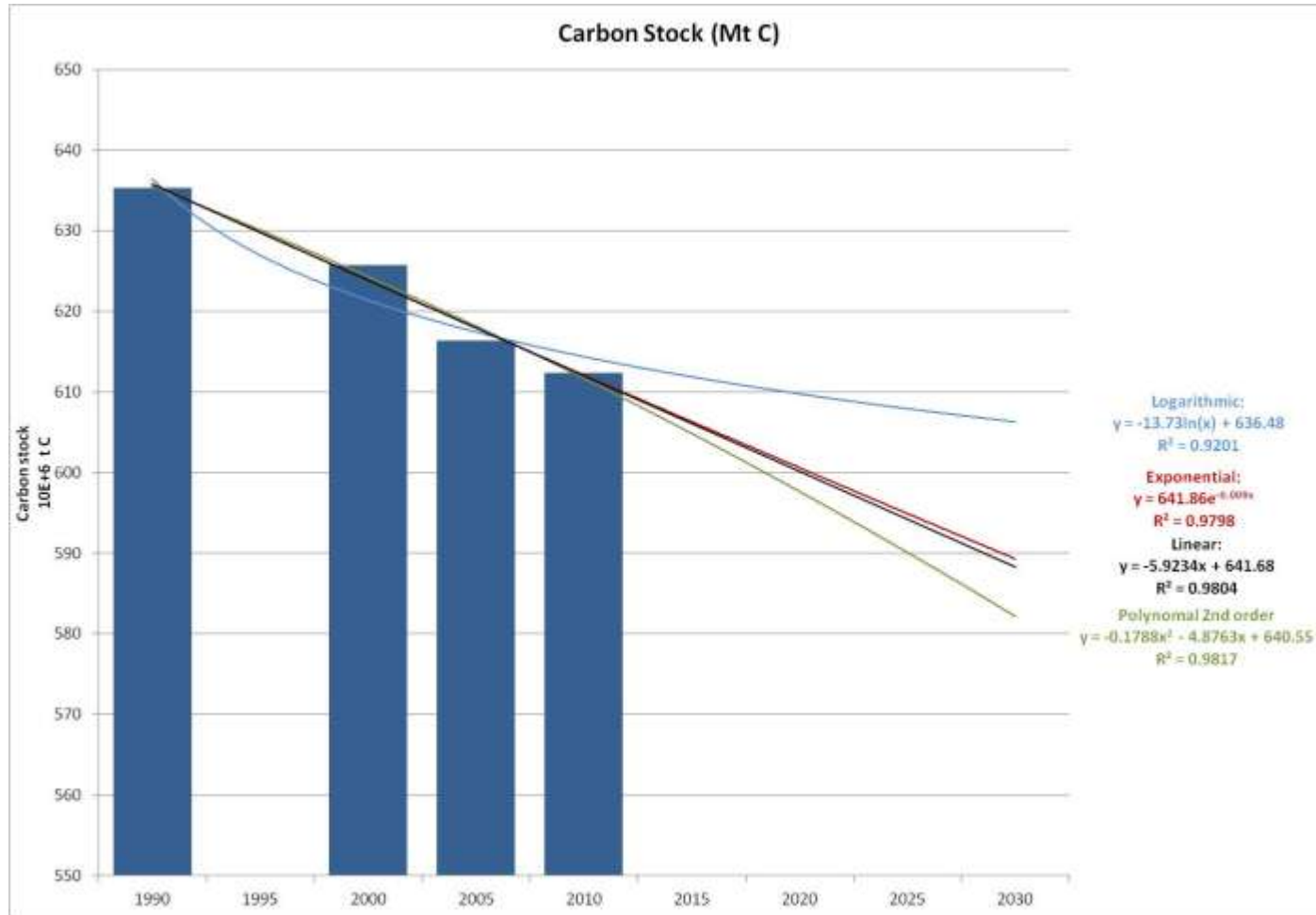


Malinau - Deforestation rate (%)



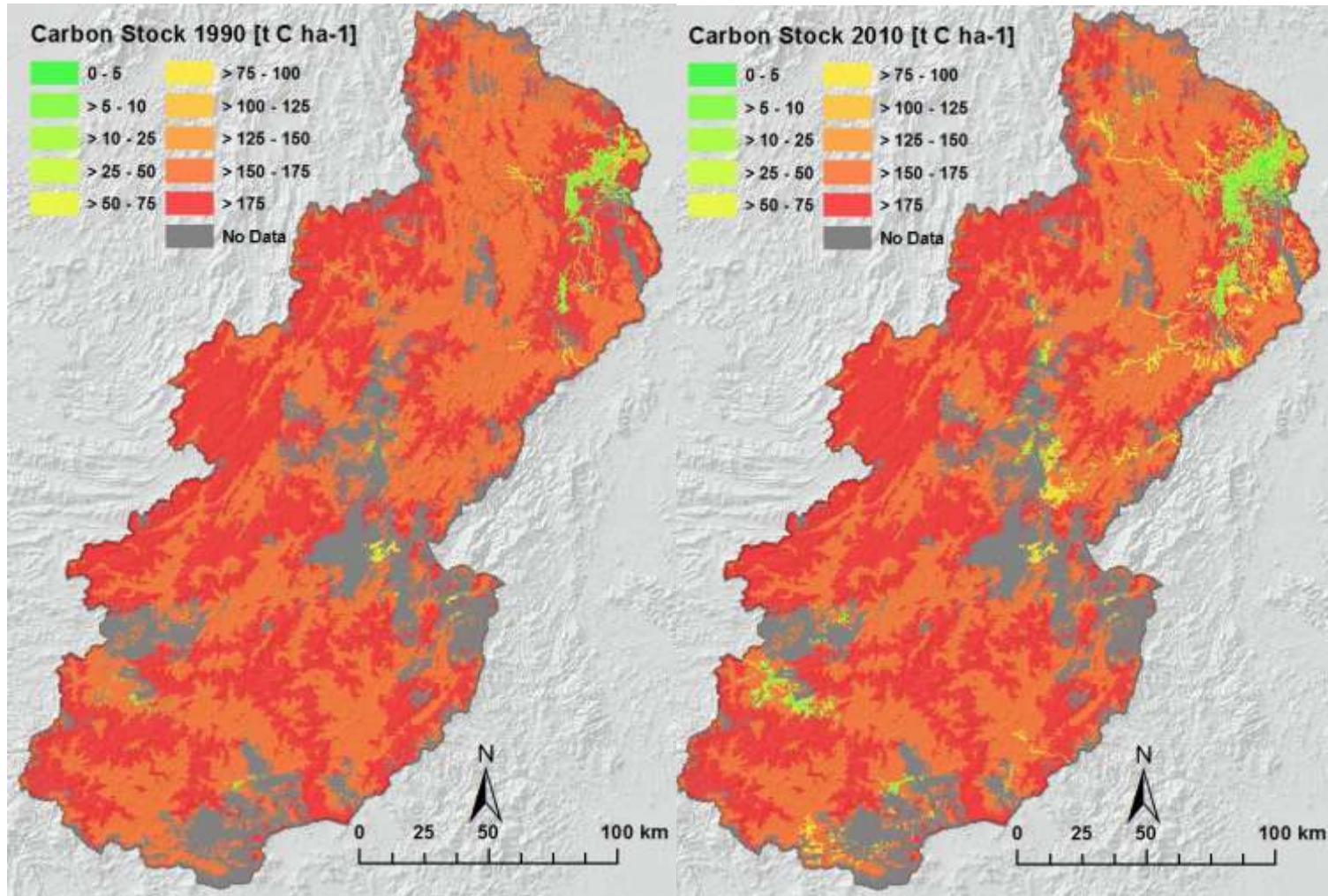


Carbon stock development 1990 - 2010 and prediction 1990 – 2030 in Malinau





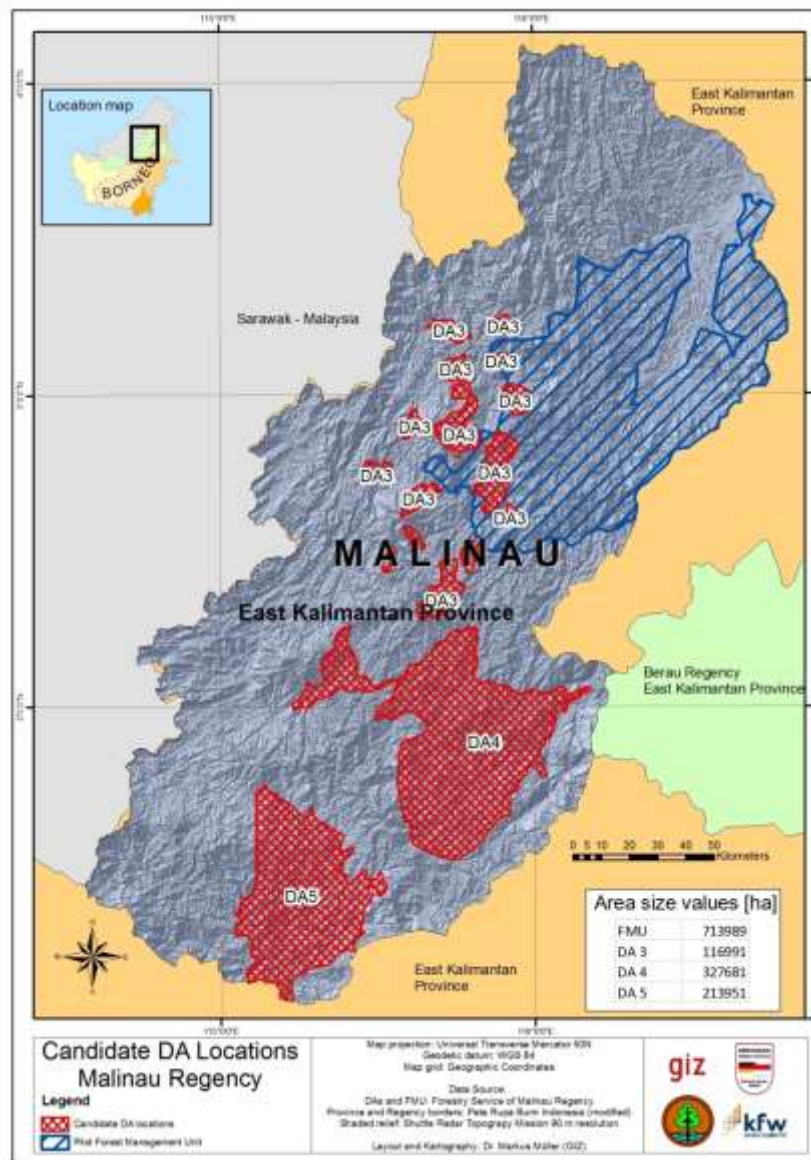
Carbon stock map for Malinau 1990 and 2010

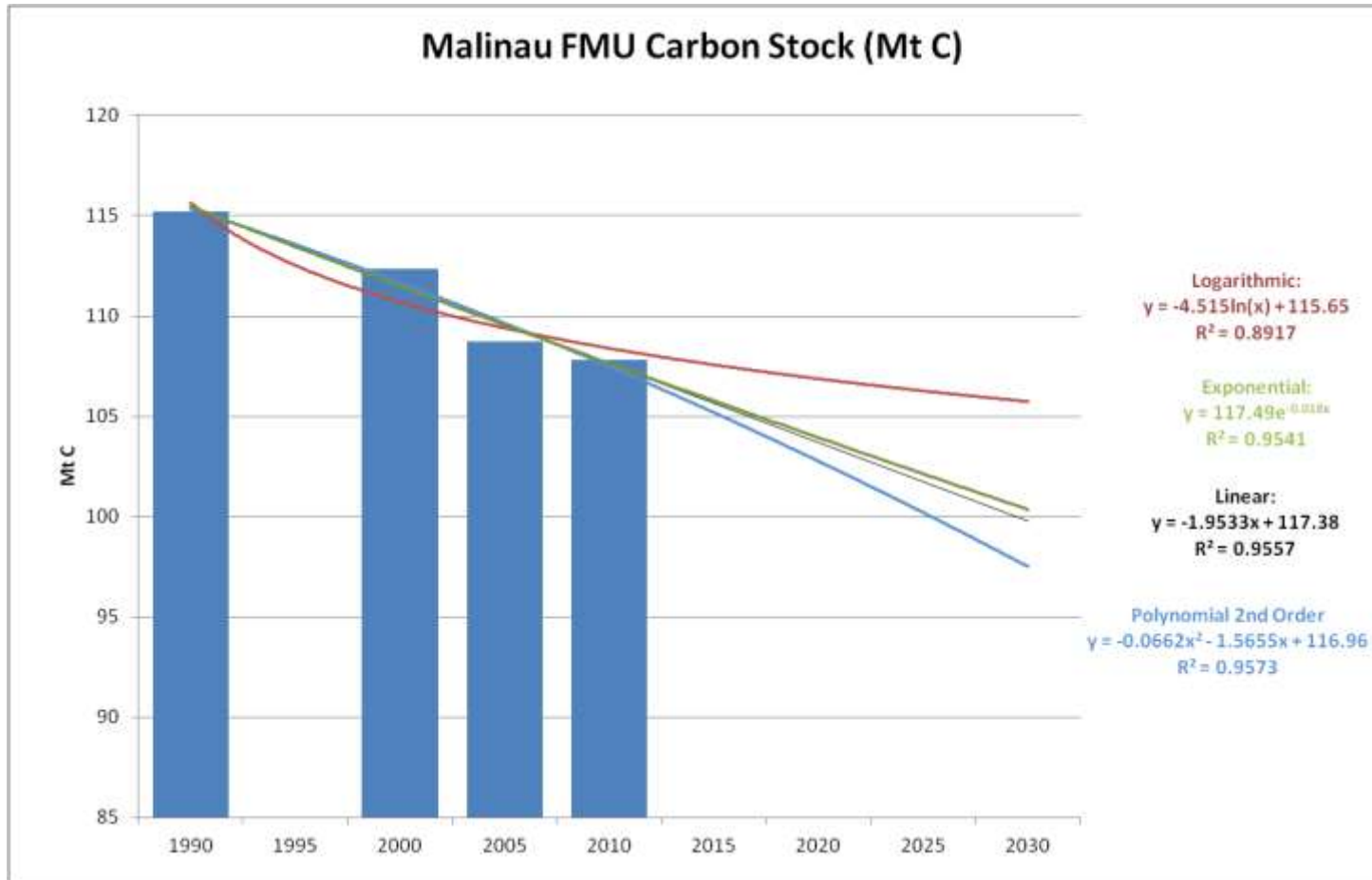




The FMU concept:

- Clearly delineated area
- Independent operational Unit
- Manageable size





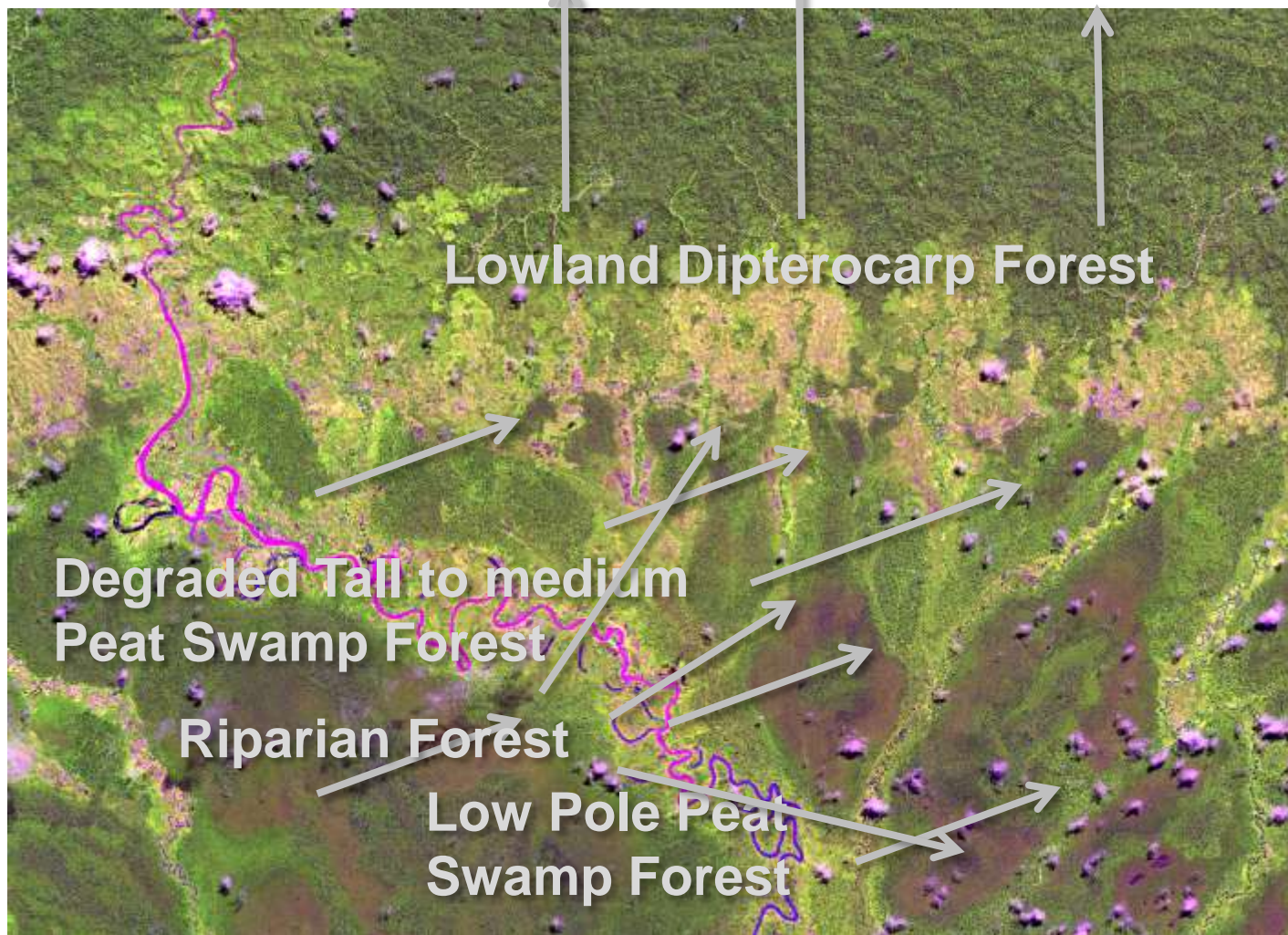
Carbon loss 1990 – 2010: 7,385,137 t C

Projected Carbon loss until 2030 (polynomial): 10,233,145 t C

approx. 10 %

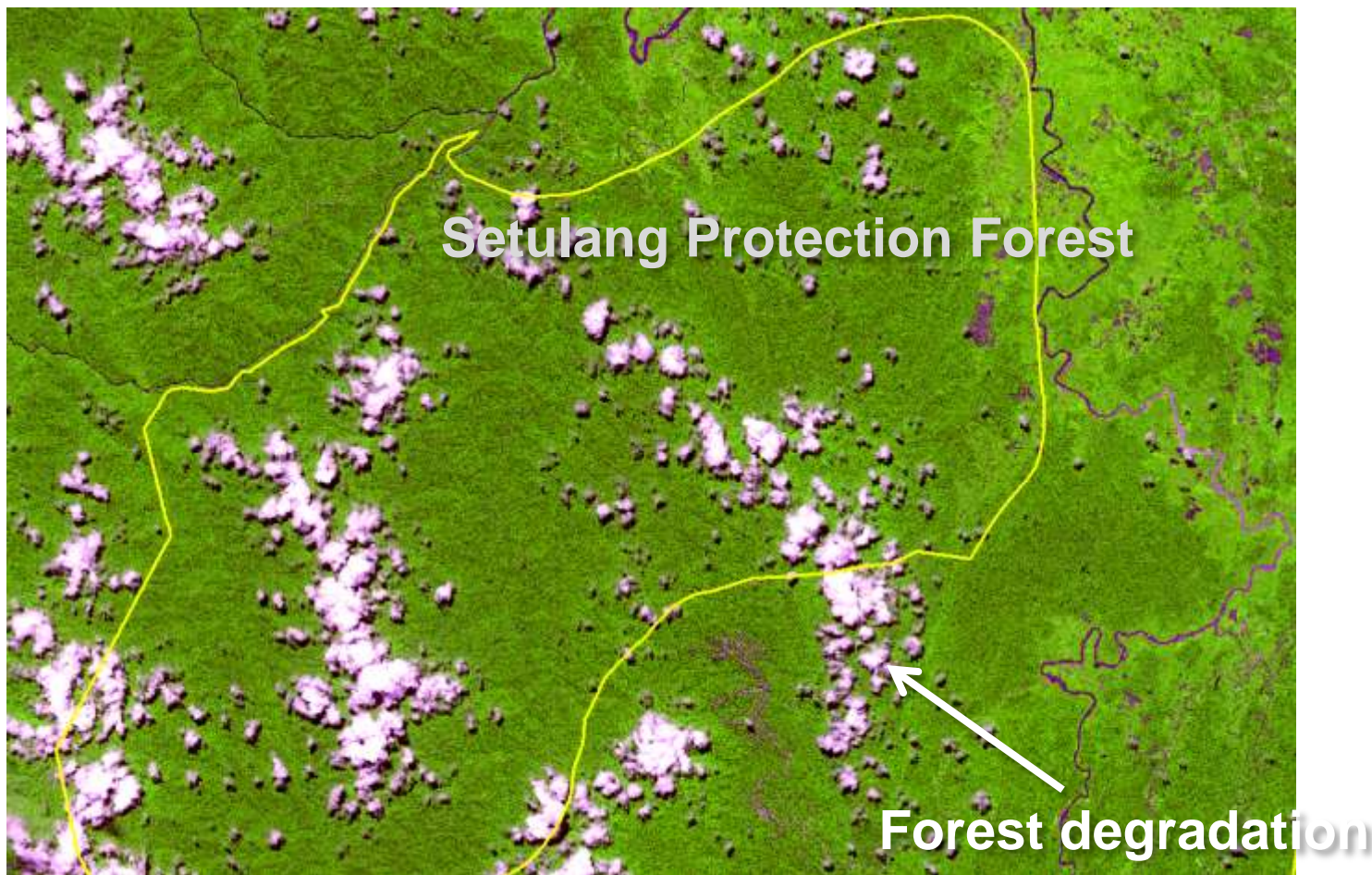


Different tropical forest types in a Rapid Eye image



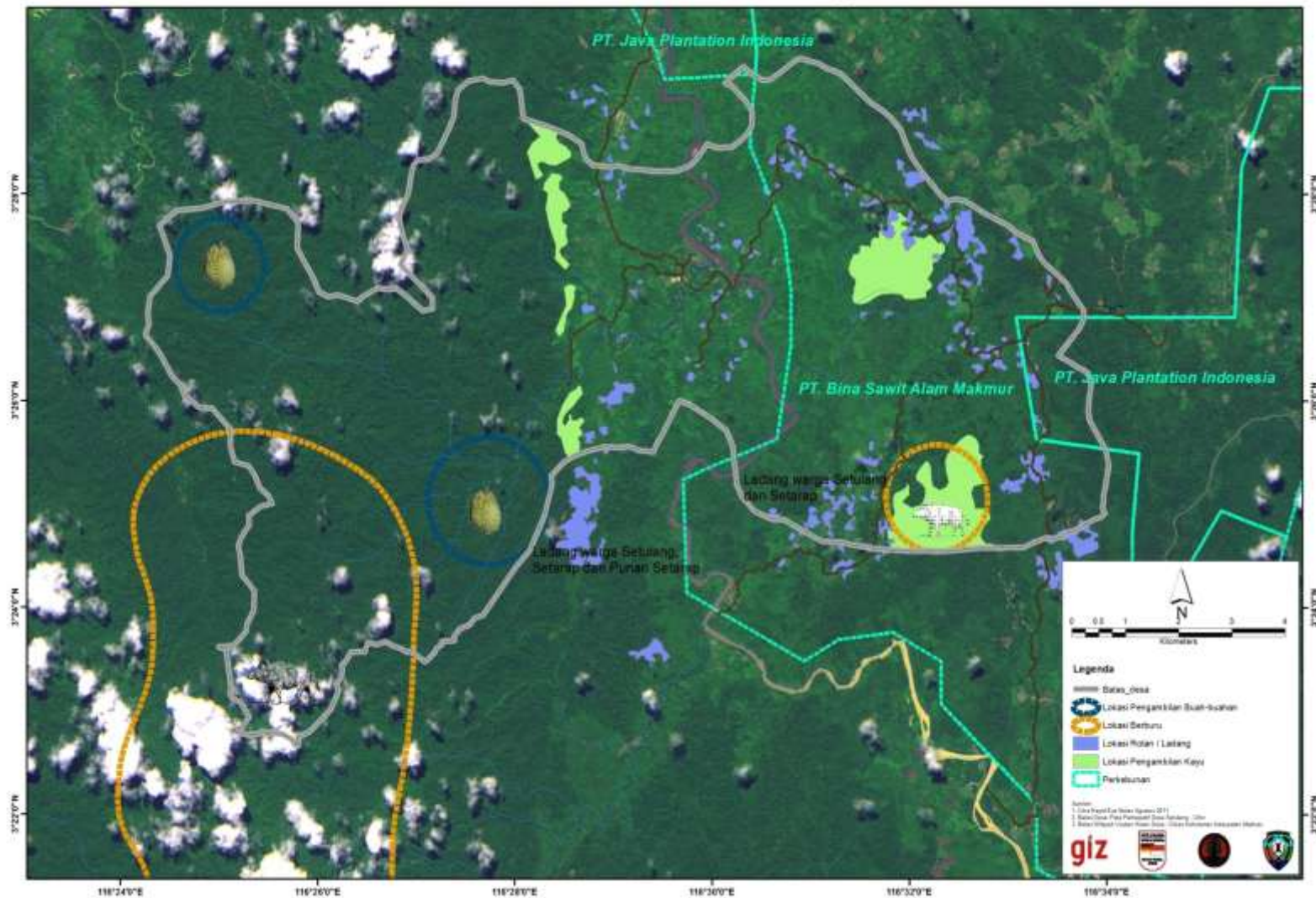


Protected village forest of Setulang and forest degradation close to the protected forest



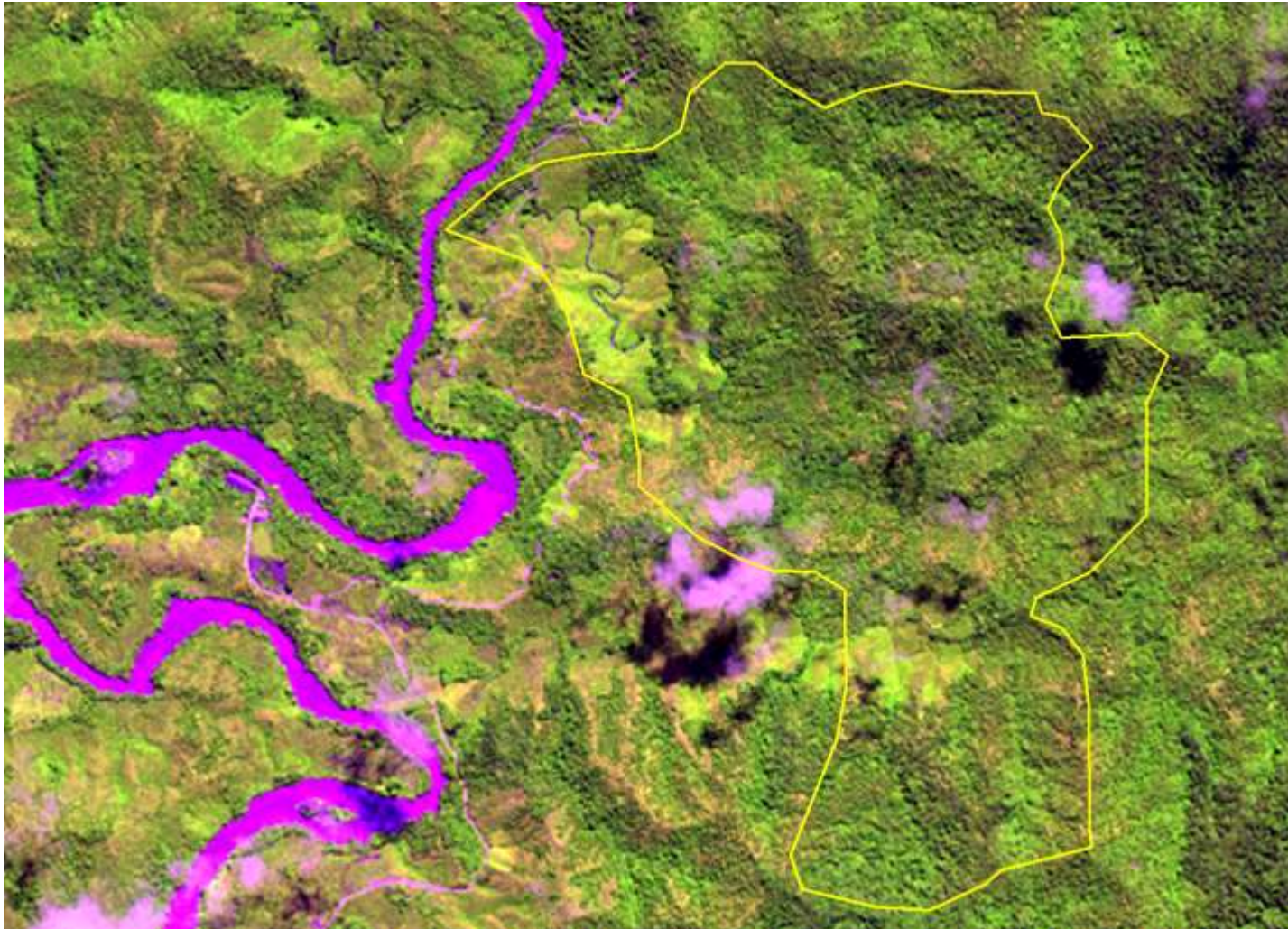


PRA Desa Setulang



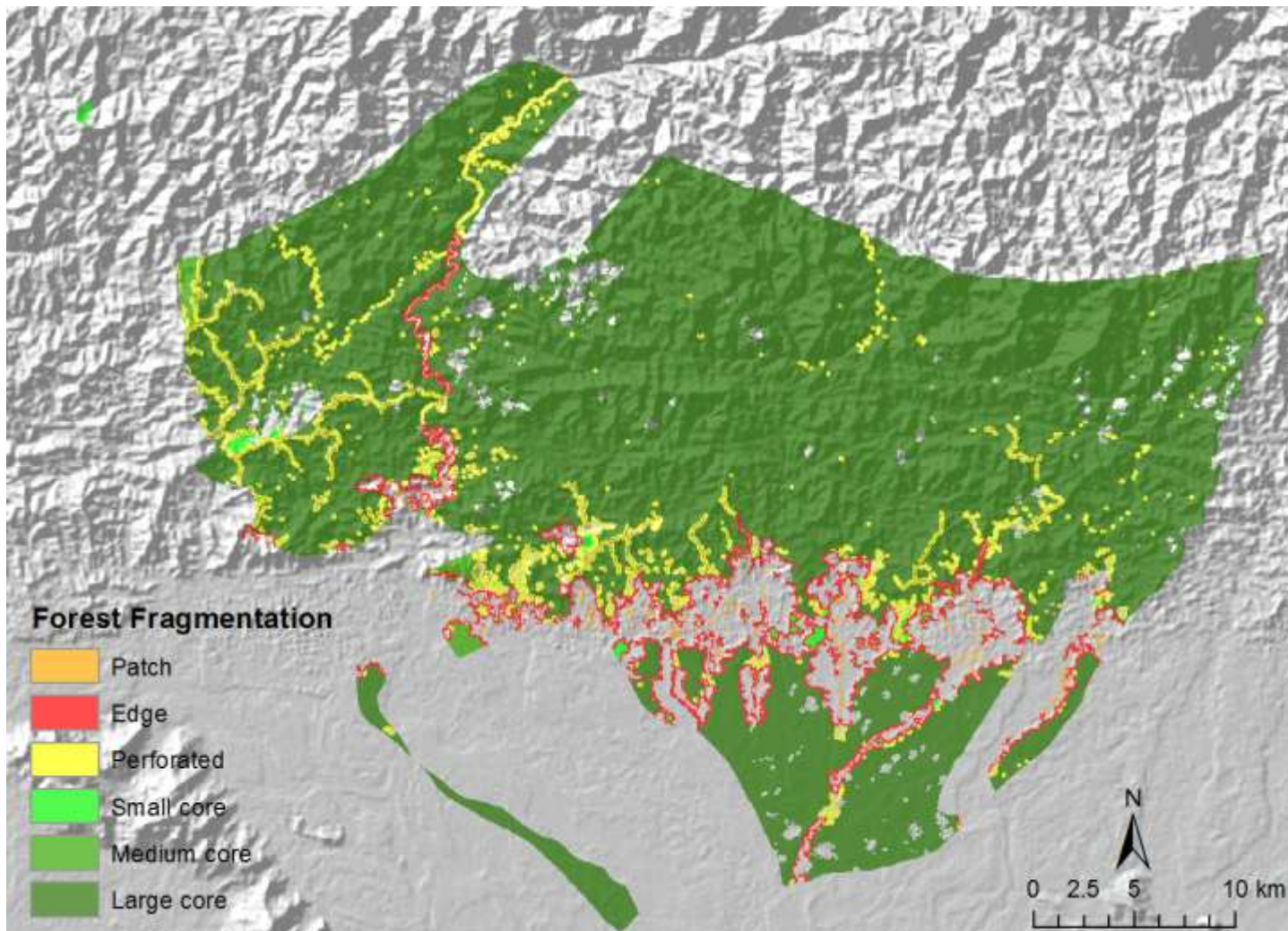


Planing of a Micro-Hydro-Power station in Kapuas Hulu





Rapid Eye image showing fragmentation of forests





Data management and decision making system

